

# Wesley's World

JUNE 2016

## What Image Best Represents Our Village?

From  
Mayor  
Marshall  
Katz



I take a lot of pride in the passion and involvement of my fellow residents. Wesley Hills is a beautiful place and many people volunteer their time to keep it that way. On page 3 of this issue you will see pictures of residents who came out on a Sunday morning to pick up garbage from around the Village as part of our annual cleanup.

We also have residents who serve on our standing Boards (Planning and Zoning), and our ad hoc committees (you

will find a report from our Parks Committee on page 2).

Wesley Hills is looking to the creativity of our residents to design the perfect image to represent our Village. The Village would like to use this image on "Welcome to the Village of Wesley Hills" signs, Village websites, business cards, letter-

artwork. Submissions may be dropped off at Village Hall or emailed to: [mayor@wesleyhills.org](mailto:mayor@wesleyhills.org) and must be submitted by July 22<sup>nd</sup>.

There are no specific guidelines, but people can look to the logos of neighboring municipalities to see what types of images they

### INSIDE THIS ISSUE:

Trash and Recycling News	2
Village Parks Committee	2
Annual Village Cleanup	3
What Have You Been Missing	4

Village and will send out a survey to all residents who are on our email list to select a winner. The winning design will be refined by a graphic artist and formatted for multiple uses.

There is no cash reward, but the winner will have bragging rights and the pride of seeing their work representing the

Village for years to come. All entries will become property of the Village.



head and more.

Residents of all ages are encouraged to submit their ideas and/or

have used. The Village Board will pick the ones they feel are most representative of the

## Rockland Recycles Presentation in Wesley Hills

Have you ever wondered what happens to your recyclables and trash once you place them outside your home? Jennifer Sheri-

dan, Assistant Educator at the Rockland County Solid Waste Management Authority, will share her knowledge on this

topic with a presentation and short video at Village Hall on Wednesday, June 22<sup>nd</sup> at 7:00pm.



## New Garbage Contractor for Village

As of June 1<sup>st</sup> our Village has a new garbage contractor, Superior Waste and Carting Inc., which will be providing the Village's garbage service through at least May 31, 2019. Our contract with Superior specifies that they will provide Village residents with the same level of service that our previous contractor, IWS, provided.

Superior has shadowed IWS to learn their routes and the service provided to each resident and will hopefully step into its responsibilities with few issues and a near seamless transition. Nevertheless, all residents are requested to call Village Hall to report any problems so that we can resolve them as-soon-as-possible. Thank you in advance for your understanding during this period of transition.



## No Plastic Bags and Plastic Film in Recycling

Plastic Bags and Plastic Film are a no-no in recycling. They cause problems in sorting and interfere with the efficiency of the recycling center. The Rockland County Solid Waste Authority mandates that they not be included in our Wednesday recycling pickup even if they have a recycling logo on them. Those that are recyclable may be dropped off at many local supermarkets and home improvement stores which have bins for them. A few of the nearby stores that accept these bags are: Wal-Mart, Target, Lowe's, ShopRite, Home Depot, JC Penny, and Whole Foods.

## Notice to Residents with Limited Mobility or Life Support Equipment

Rockland County has developed a registry for residents with limited mobility or special needs, which might impact a timely response during an emergency. If you believe you, or someone you care for, is unable to independently act upon emergency protective orders, you or the person you care for should register. People on the registry will:

- Receive individual notification when an evacuation has been ordered
- Local emergency personnel will be made aware of your

individual considerations

- Emergency responders will be able to plan, and be prepared to assist you.

To register please click [here](#).

Additionally, if you are on Life Support Equipment (LSE), Orange and Rockland's LSE Program is there to help you in case of an electrical outage. Information on the program can be found by clicking [here](#).

## Village Parks Committee Report

By Trustee Howard Richman

The Village owns several walking paths and Greg Sikorsky Children's Park on Lime Kiln Road. During the Summer/Fall 2015 season, residents of the Village brought to the attention of Village officials an increase in litter in the park. Initially the response was to increase our trash pickup at the park. The conditions continued to deteriorate. At the request of the Mayor, I and half a dozen community members formed a com-

mittee to tackle the larger issues involving the park and cleanliness. The committee has met twice and is considering a variety of options from resident only use to requiring a permit for large groups to use the park. Our current law permits the Village to ticket litterers and we have asked the Police to increase patrols the park in order to seek compliance with our anti-litter law. The committee is also exploring video surveillance of the park.

Your ideas and involvement is ap-

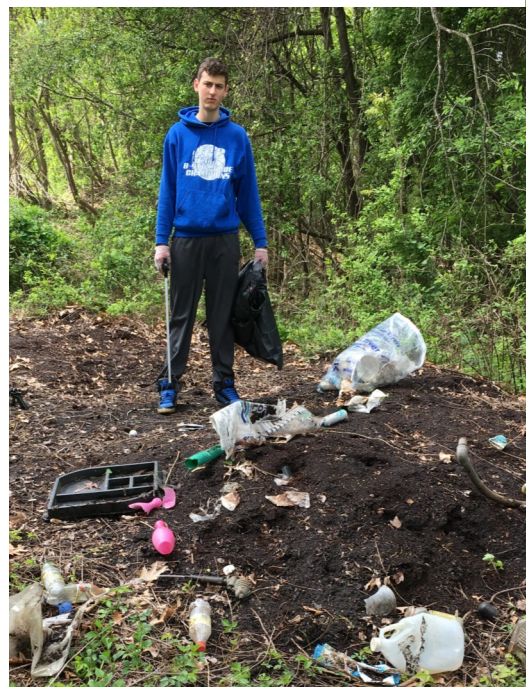
preciated. Our next meeting will be in late June and if you are interested in attending call Village Hall for the time and date. I look forward to seeing you then.





## Images from the Wesley Hills Annual Cleanup

Thank you to all the people who came out for the annual Village cleanup on May 15th. A special thank you to Avia Lasky for helping out with the sign in table.





## Village of Wesley Hills

432 Route 306  
Wesley Hills, NY

Phone: 845-354-0400

Fax: 845-354-4097

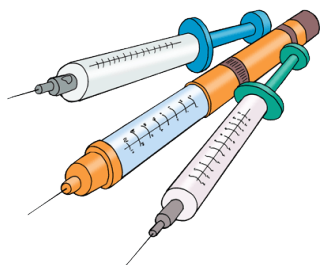
PRSRT STD  
U.S. POSTAGE PAID  
PERMIT #70  
MONSEY, NY 10952

*Sign up for the Village  
Email List to get  
Village announcements  
and other important  
local information.  
Send a request to  
[mayor@wesleyhills.org](mailto:mayor@wesleyhills.org)*

[WWW.WESLEYHILLS.ORG](http://WWW.WESLEYHILLS.ORG)

## Sharps Collection Schedule

Rockland County manages a disposal program for needles, syringes and lancets used by residents for self medication. The schedule may be found on the Village website, [www.wesleyhills.org](http://www.wesleyhills.org) under the "Links" tab.



## Find Out What You Have Been Missing

If you are not a member of the Village's email list you are missing a lot of good, timely information.

To get on the email list, send an email to [mayor@wesleyhills.org](mailto:mayor@wesleyhills.org) which includes your name and mailing address.

In just the last 2 months people on the list have learned about:

- A meeting concerning local water quality
- The Village Cleanup
- Free Mosquito Dunks
- Public Service Commission hearings on New York's Clean Energy Standard
- Lake DeForest Day
- Outfall inspectors in the Village
- Free rabies shots for pets
- Compost bins and rain barrels for sale at cost
- The NYS Presidential Primary
- Passover holiday dumpsters

- Document shredding events
- Library book sales
- Lafayette Theater's 92<sup>nd</sup> Anniversary Celebration
- The Wild and Scenic Film Festival
- Forshay Road project updates
- and more

