

NOTES:

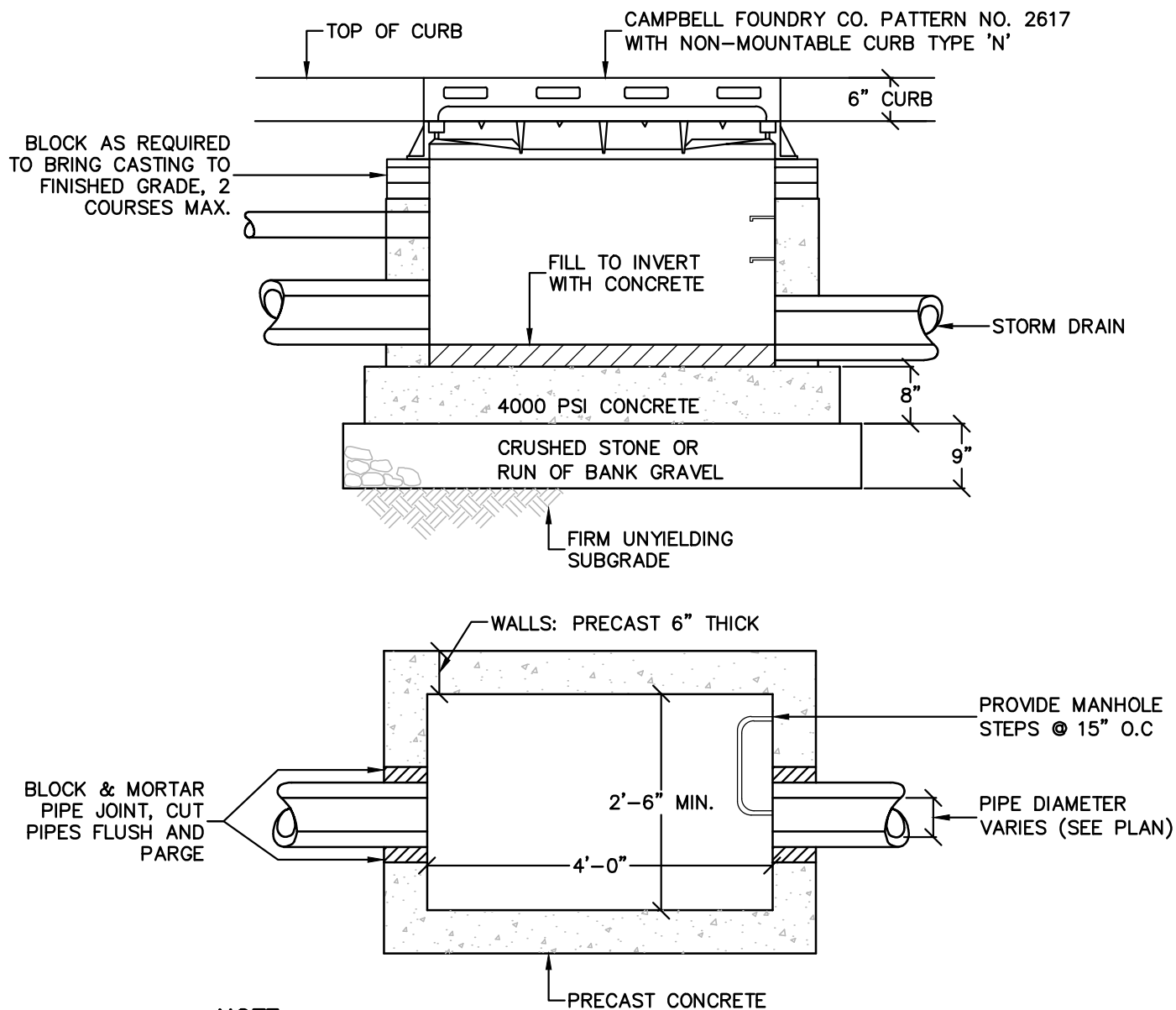
1. EXPANSION JOINTS OF 3/16" CELLULOSE OR SIMILAR MATERIAL SHALL BE PLACED AT TEN FOOT INTERVALS, TO FULL DEPTH OF CURB.
2. UNDERDRAIN MAY BE ELIMINATED IN PARKING LOTS AND OTHER NON-PUBLIC FACILITIES.

BELGIAN BLOCK CURB DETAIL

N.T.S.

VILLAGE OF WESLEY HILLS
ROCKLAND COUNTY, N.Y.

BELGIAN BLOCK CURB DETAIL



NOTE:

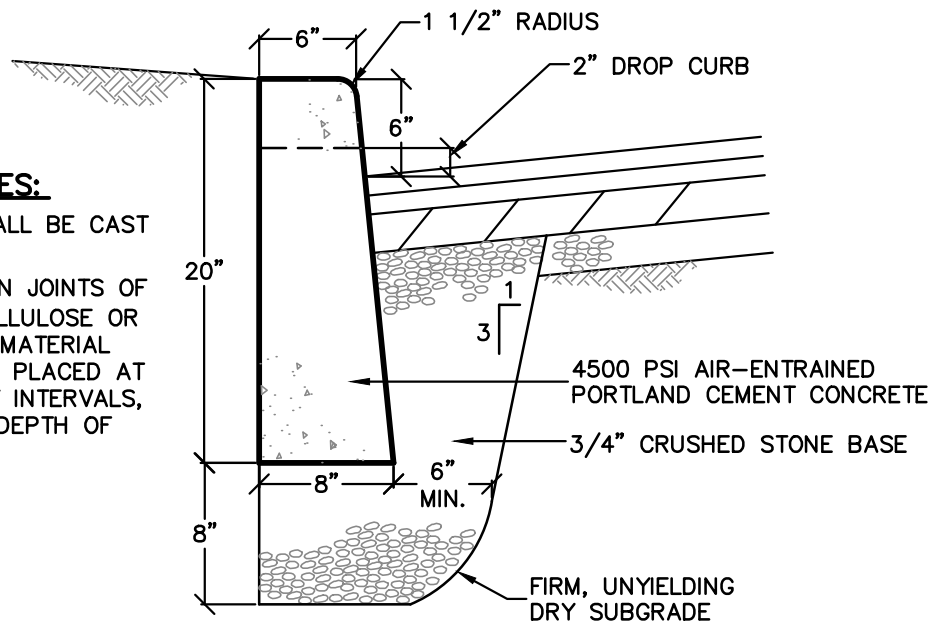
MINIMUM STRENGTH CONCRETE 4000 PSI WALL THICKNESS 6" WITH ADEQUATE STEEL REINFORCEMENT TO WITHSTAND H20 HIGHWAY LOAD AND SOIL LOADS.

CATCH BASIN DETAIL
N.T.S.

VILLAGE OF WESLEY HILLS
ROCKLAND COUNTY, N.Y.
CATCH BASIN DETAIL

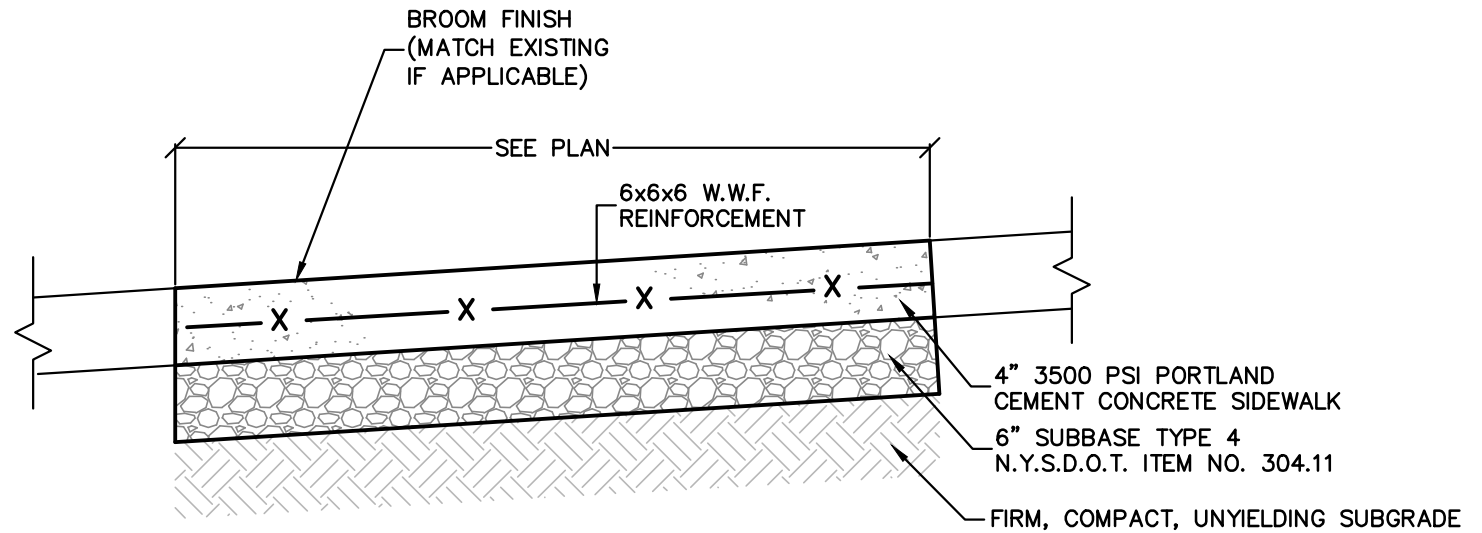
CURB NOTES:

1. CURB SHALL BE CAST IN PLACE.
2. EXPANSION JOINTS OF 3/16" CELLULOSE OR SIMILAR MATERIAL SHALL BE PLACED AT TEN FOOT INTERVALS, TO FULL DEPTH OF CURB.



CONCRETE CURB DETAIL

N.T.S.

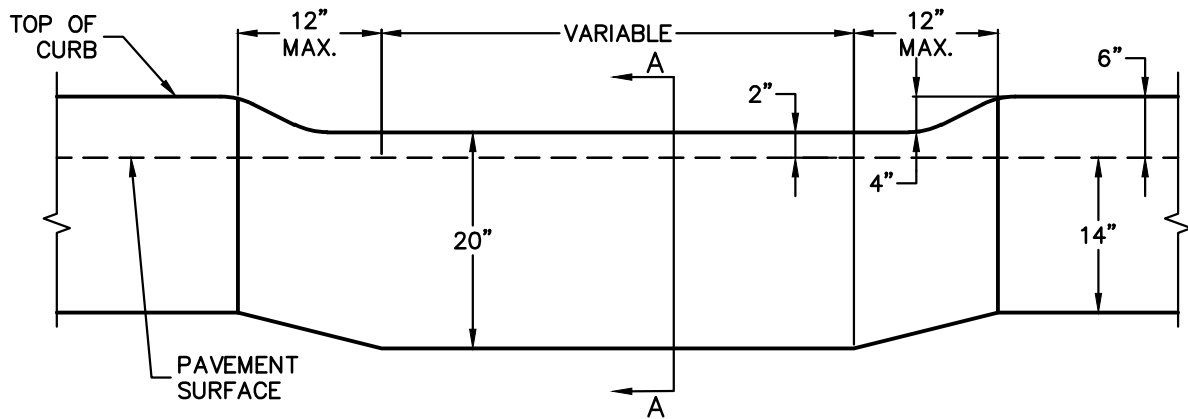


CONCRETE SIDEWALK NOTES

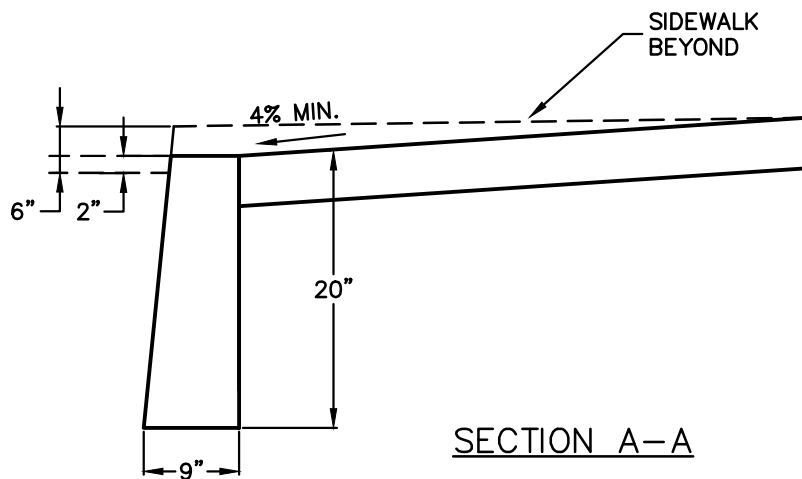
1. FULL DEPTH TRANSVERSE CONSTRUCTION JOINTS SHALL BE PLACED EVERY 18-20 FEET.
2. CONCRETE SURFACE SHALL BE SCORED AND TOOLED EVERY 5 FEET.
3. ALL EDGES SHALL BE FINISHED WITH AN EDGING TOOL WITH A RADIUS OF 1/4 INCH.
4. A 3/4 INCH BITUMINOUS JOINT FILLER SHALL BE PLACED AT ALL JOINTS BETWEEN SIDEWALK, CURB, PAVEMENT, BUILDING, ETC.
5. THE CONCRETE SHALL BE FINISHED TO PRODUCE A SMOOTH FINISH AND THEN LIGHTLY BROOMED TO A UNIFORM TEXTURE.
6. A CLEAR MEMBRANE CURING COMPOUND SHALL BE USED UPON COMPLETION OF FINISHING.
7. ALL SIDEWALKS SHALL ADHERE TO ADA GUIDELINES.

CONCRETE SIDEWALK DETAIL N.T.S.

VILLAGE OF WESLEY HILLS ROCKLAND COUNTY, N.Y.
CONCRETE SIDEWALK DETAIL



ELEVATION



SECTION A-A

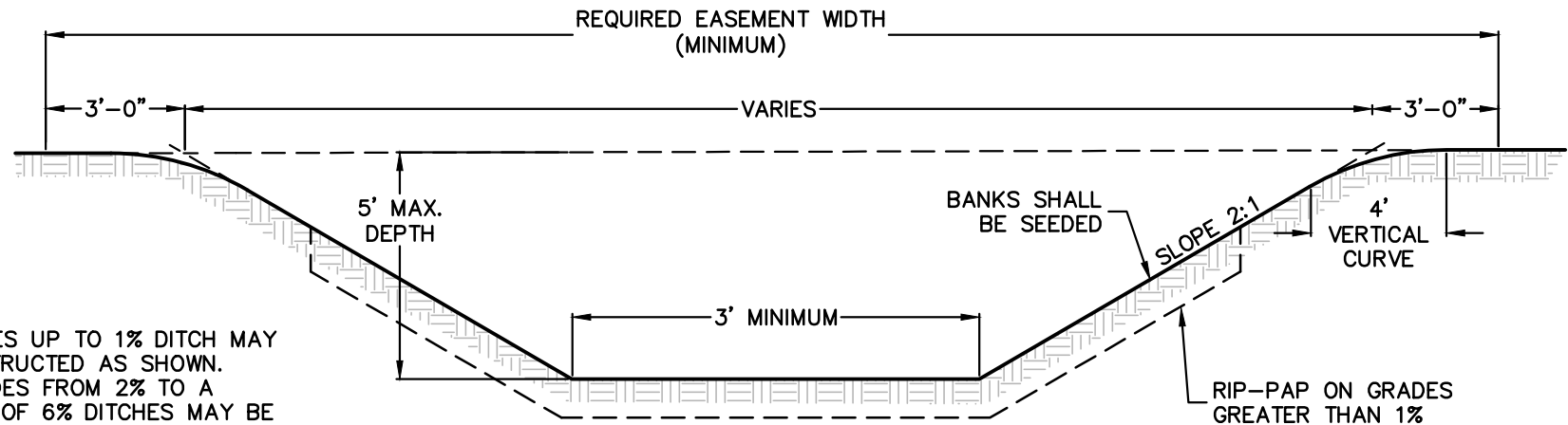
DEPRESSED CURB DETAIL

N.T.S.

NOTES:

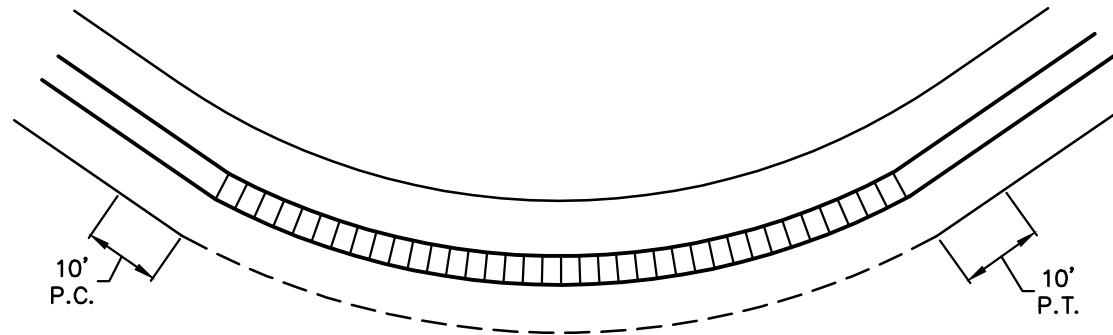
1. CONCRETE TO TEST 4000 PSI MIN. ON 28 DAY COMPRESSIVE TEST.
2. STEEL SEPARATIONS SHALL BE USED WITH ALL THE FORMS TO CREATE A CONSTRUCTION JOINT EVERY 10 FEET ALONG CURB.
3. CONTRACTOR TO NOTIFY VILLAGE ENGINEER PRIOR POURING.

VILLAGE OF WESLEY HILLS
ROCKLAND COUNTY, N.Y.
DEPRESSED CURB DETAIL



1. ON GRADES UP TO 1% DITCH MAY BE CONSTRUCTED AS SHOWN.
2. FOR GRADES FROM 2% TO A MAXIMUM OF 6% DITCHES MAY BE CONSTRUCTED ONLY IF RIP-RAPPED TO A HEIGHT ONE FOOT ABOVE HIGHEST ANTICIPATED WATER LEVEL.

SECTION THRU DITCH



1. WHERE DITCH CURVES ON RADIUS LESS THAN 100 FT. BOTTOM & OUTSIDE BANK OF DITCH SHALL BE RIP-RAPPED AS SHOWN. RIP-RAP SHALL EXTEND ONE FOOT ABOVE HIGHEST ANTICIPATED WATER LEVEL.

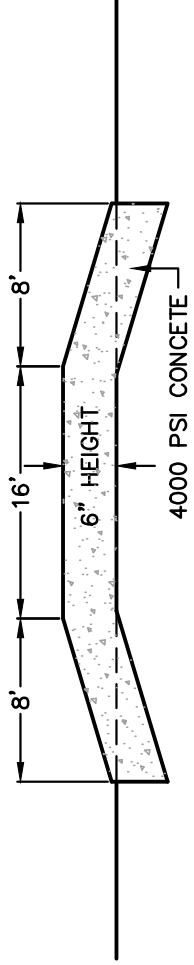
PLAN

DITCH DETAIL

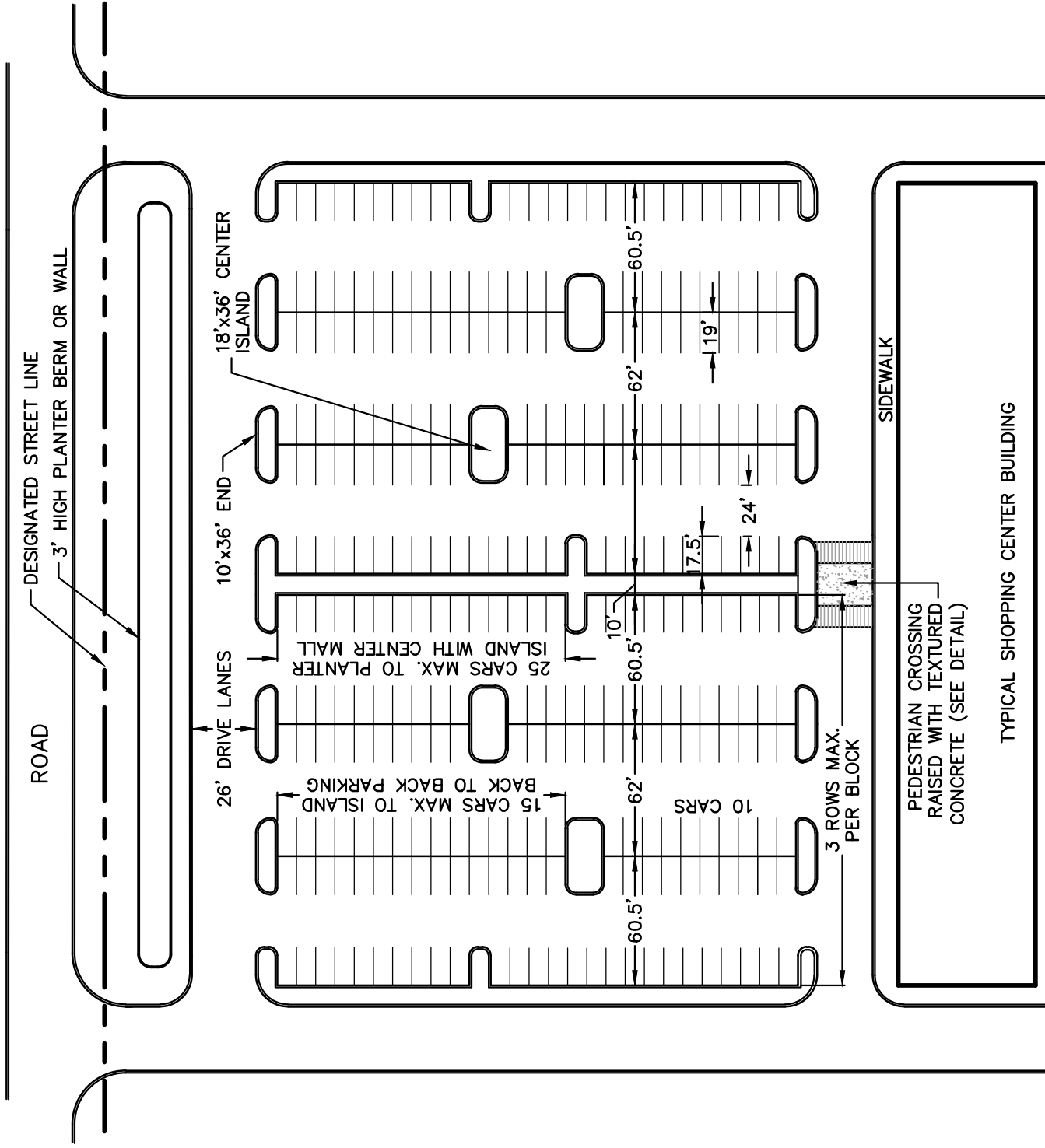
N.T.S.

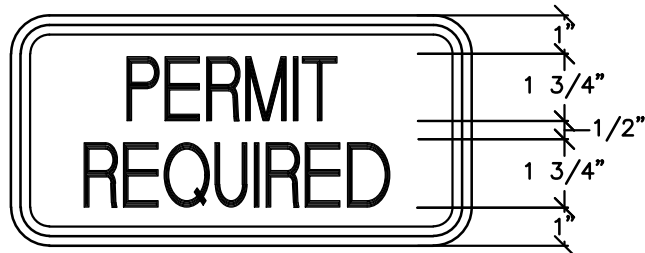
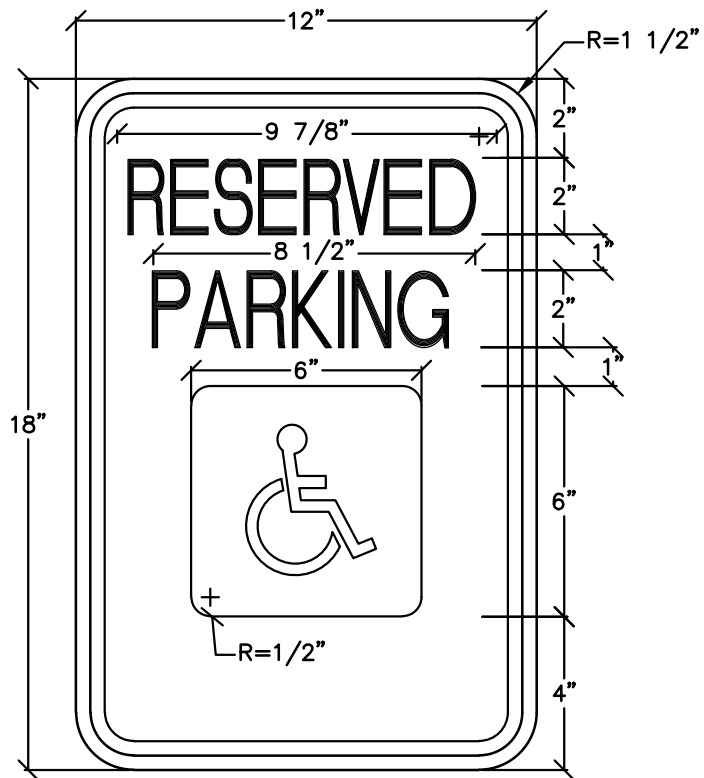
VILLAGE OF WESLEY HILLS
ROCKLAND COUNTY, N.Y.

DITCH DETAIL



DETAIL – PEDESTRIAN CROSSING

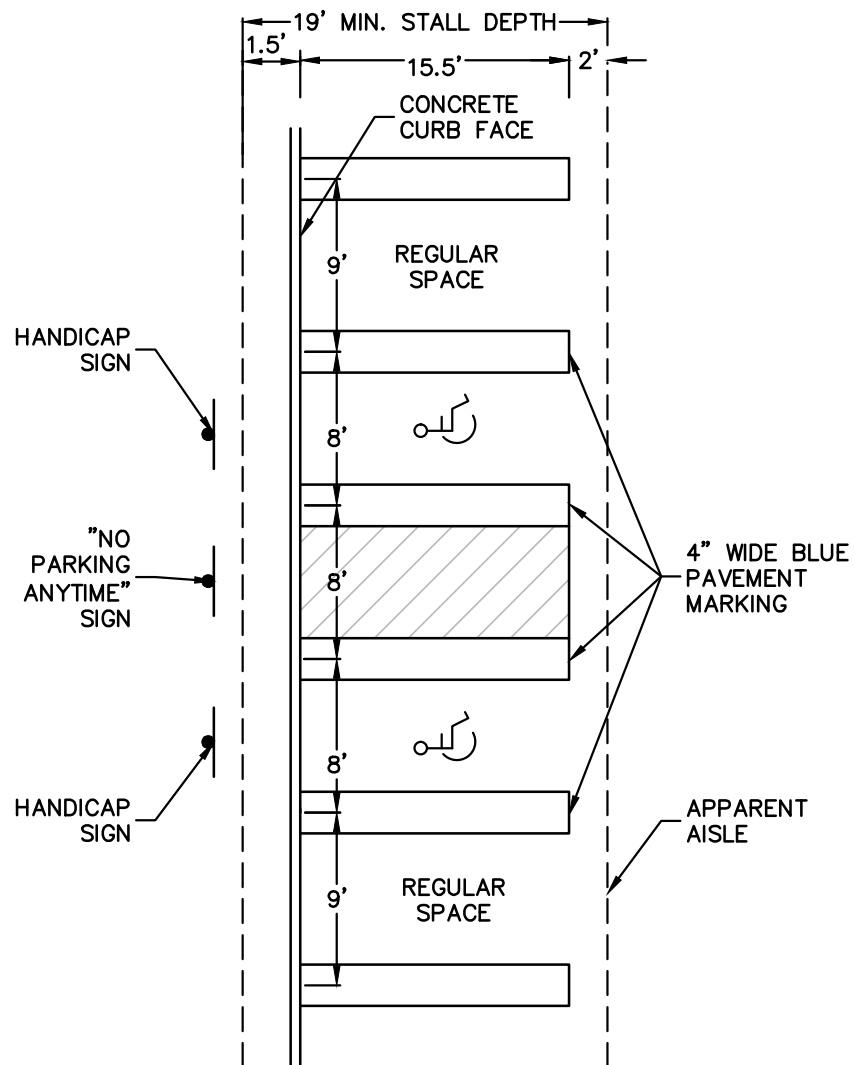




LETTERING AND BORDER - GREEN
 WHITE SYMBOL ON BLUE BACKGROUND
 BACKGROUND - WHITE

HANDICAP PARKING SIGN

N.T.S.



NOTES:

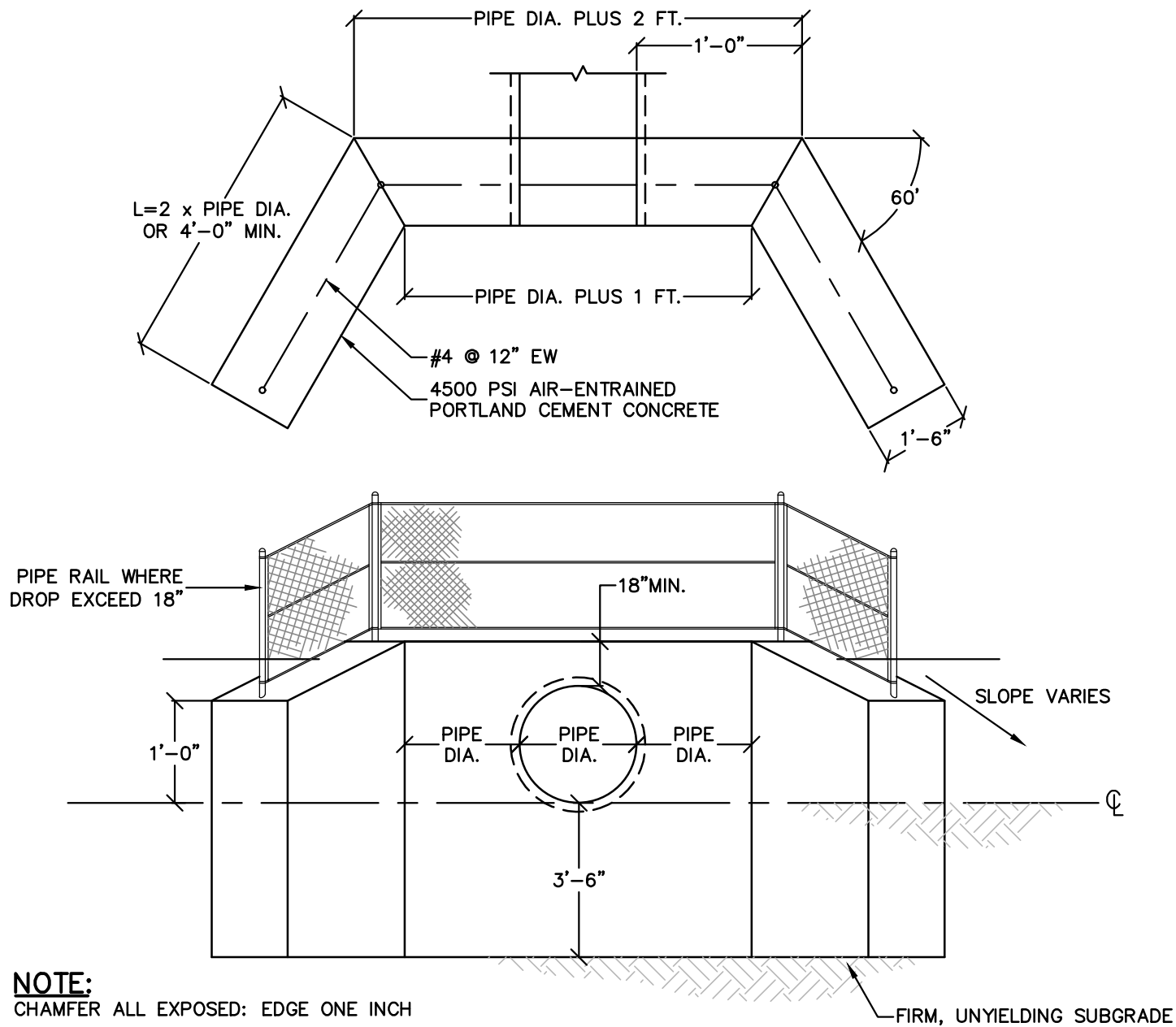
1. EACH ACCESSIBLE PARKING SPACE SHALL BE PROVIDED WITH SIGNAGE DISPLAYING THE INTERNATIONAL SYMBOL OF ACCESSIBILITY.
2. EACH ACCESS AISLE SHALL BE PROVIDED WITH SIGNAGE READING "NO PARKING ANYTIME".
3. SIGN SHALL BE PERMANENTLY INSTALLED AT A CLEAR HEIGHT OF BETWEEN 60 INCHES (1525 MM) AND 84 INCHES (2185 MM) ABOVE GRADE AND SHALL NOT INTERFERE WITH AN ACCESSIBLE ROUTE FROM AN ACCESS AISLE.

HANDICAP PARKING STRIPING DETAIL

N.T.S.

VILLAGE OF WESLEY HILLS
ROCKLAND COUNTY, N.Y.

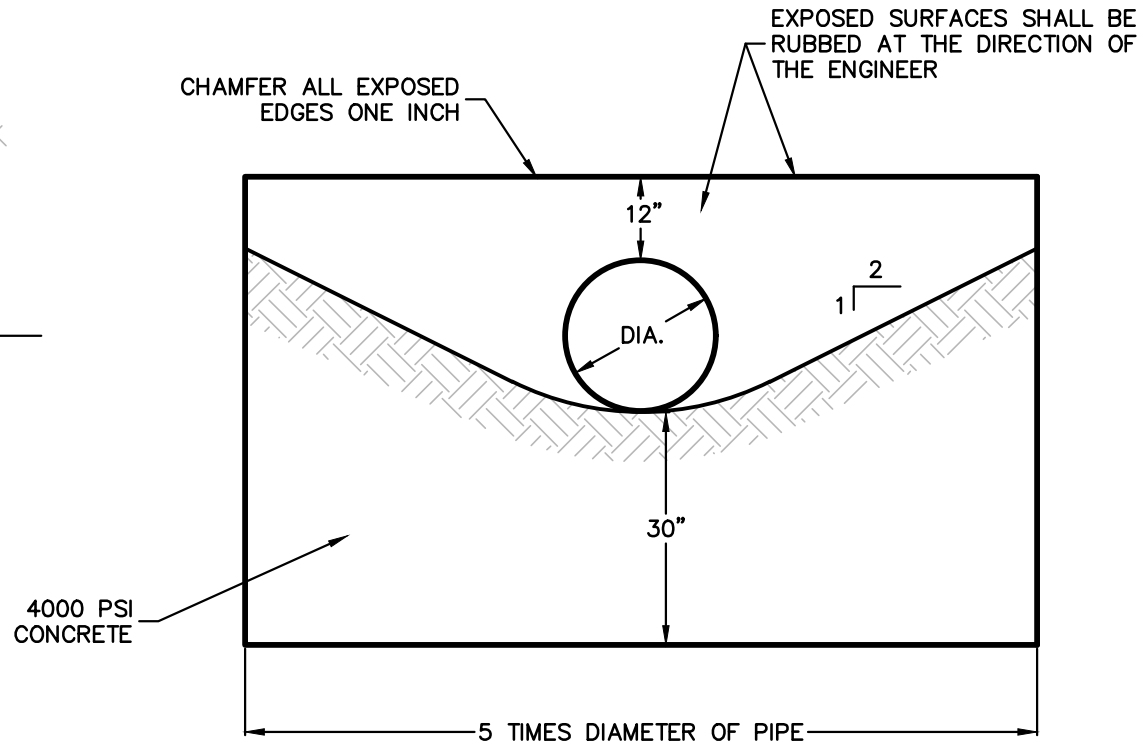
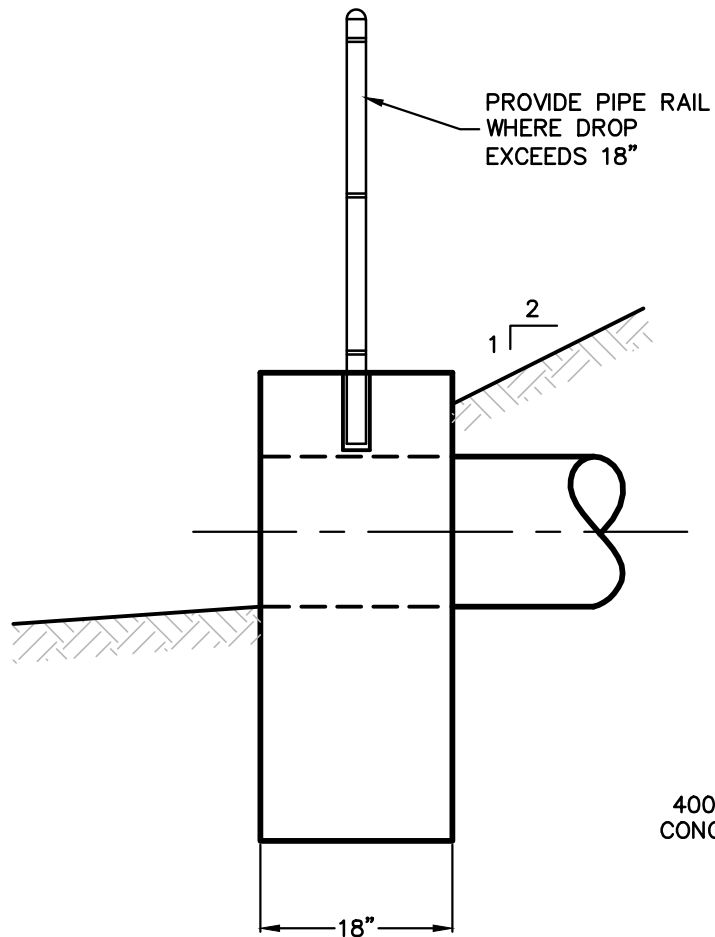
HANDICAP PARKING STRIPING DETAIL



HEADWALL DETAIL

N.T.S.

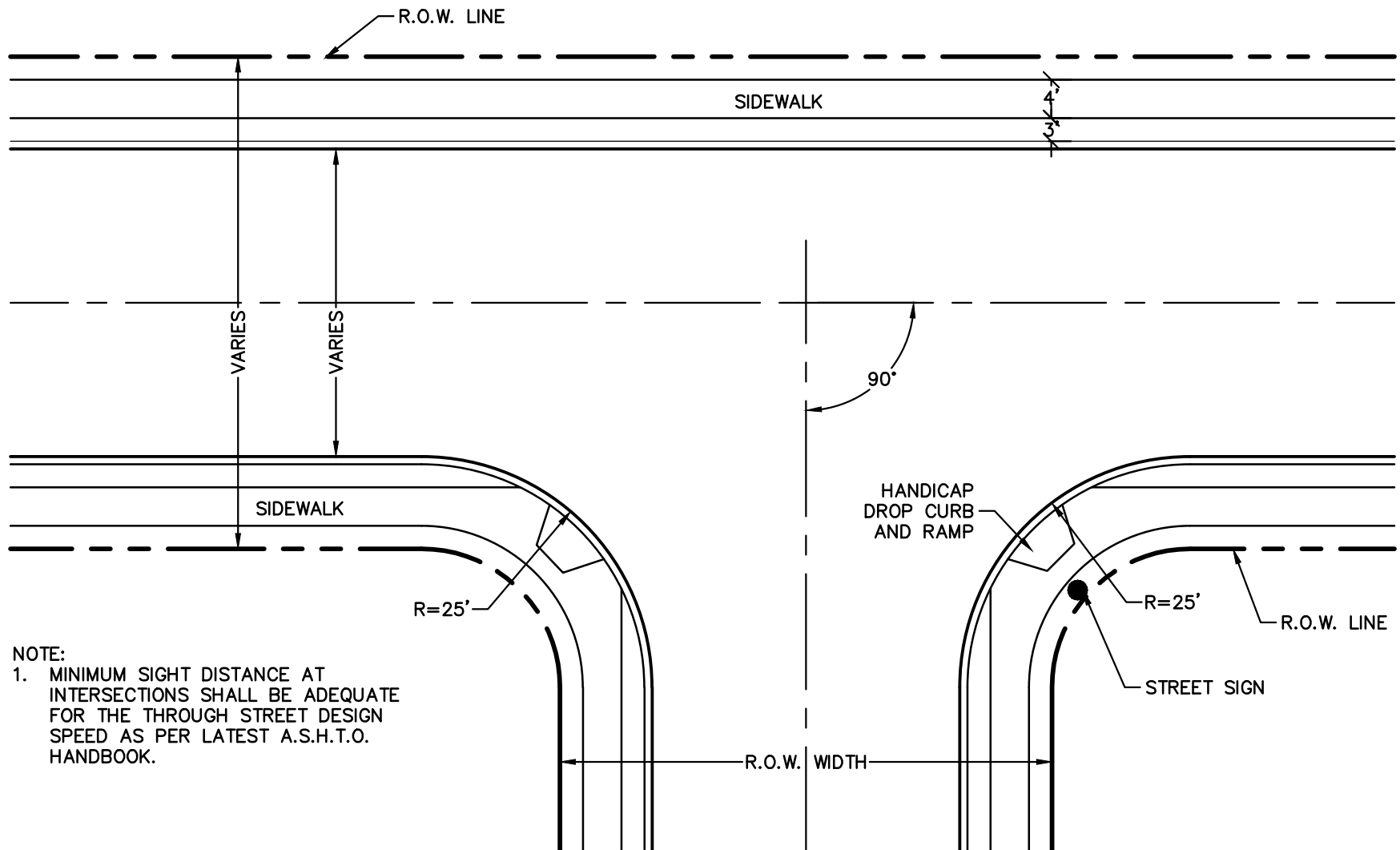
VILLAGE OF WESLEY HILLS
ROCKLAND COUNTY, N.Y.
HEADWALL DETAIL



HEADWALL DETAIL

N.T.S.

VILLAGE OF WESLEY HILLS
ROCKLAND COUNTY, N.Y.
HEADWALL DETAIL



NOTE:

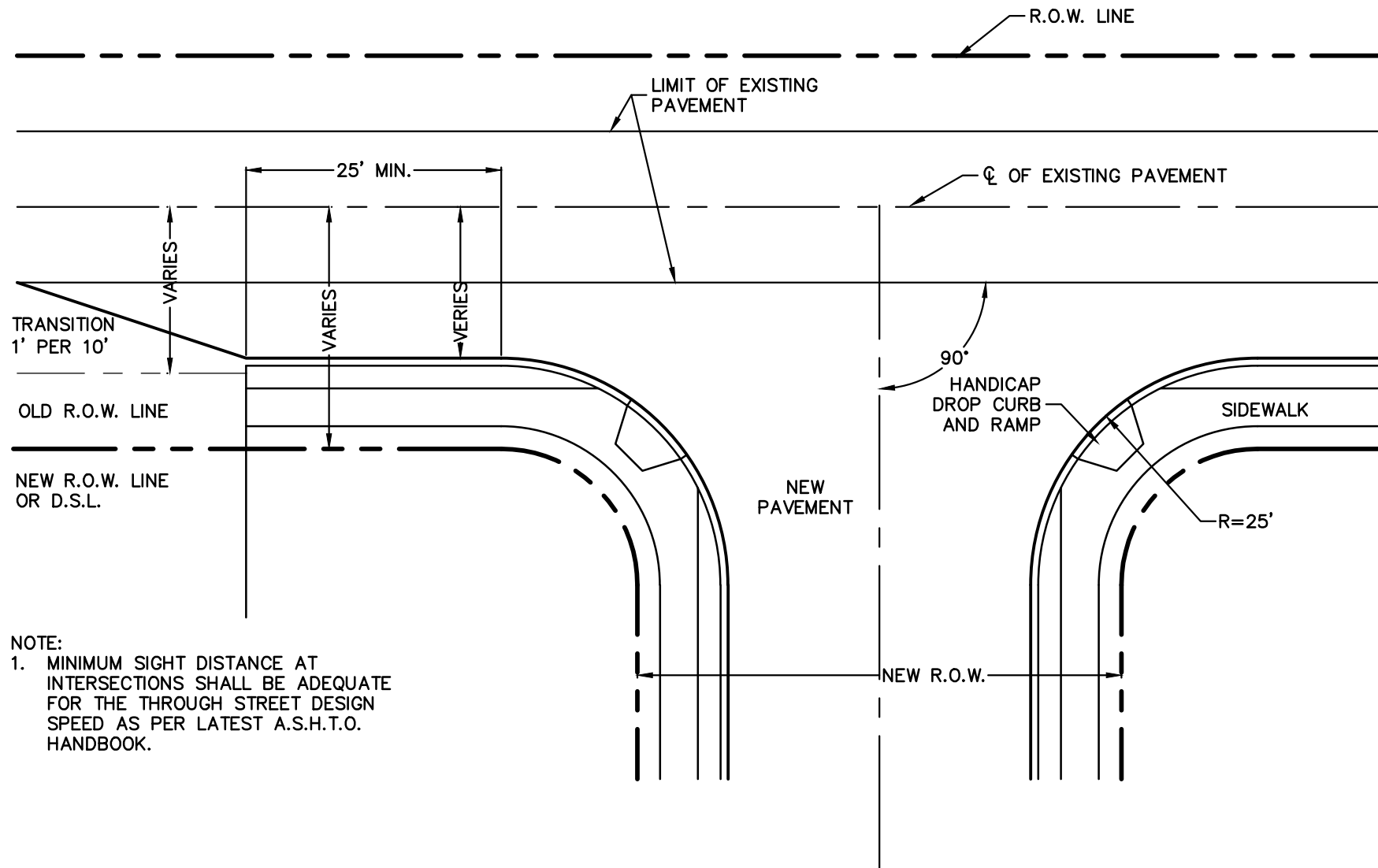
1. MINIMUM SIGHT DISTANCE AT INTERSECTIONS SHALL BE ADEQUATE FOR THE THROUGH STREET DESIGN SPEED AS PER LATEST A.S.H.T.O. HANDBOOK.

INTERSECTION OF TWO NEW STREETS DETAIL

N.T.S.

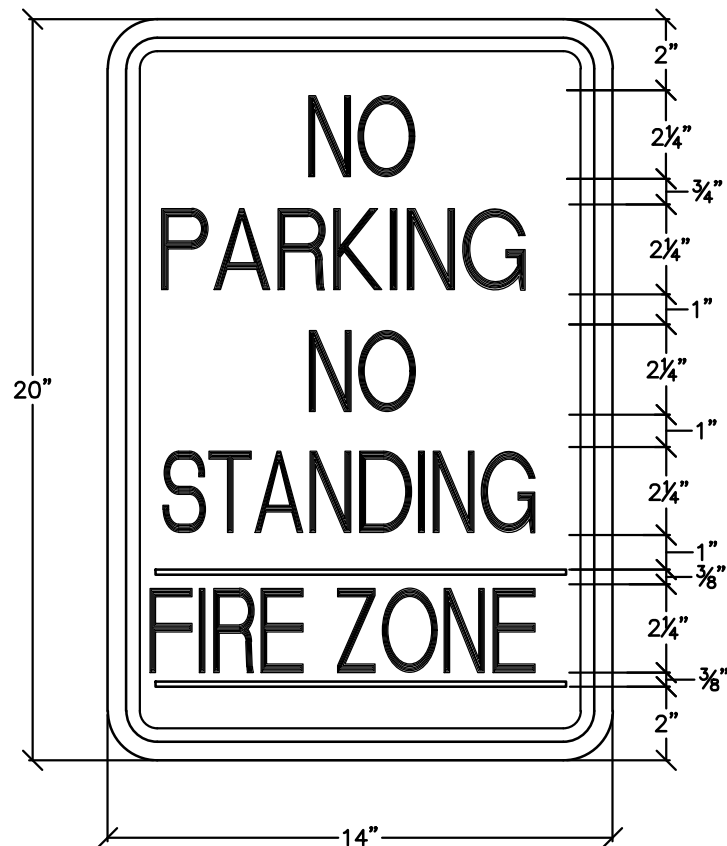
VILLAGE OF WESLEY HILLS
ROCKLAND COUNTY, N.Y.

INTERSECTION OF TWO NEW STREETS



NEW STREET WITH OLD NARROW ROAD DETAIL N.T.S.

VILLAGE OF WESLEY HILLS ROCKLAND COUNTY, N.Y.
NEW STREET WITH OLD NARROW ROAD

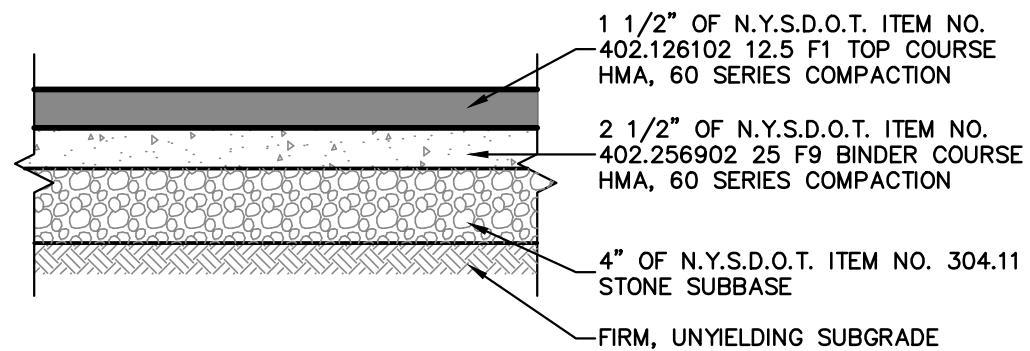


LETTERING AND BORDER — RED
BACKGROUND — WHITE

NO PARKING / NO STANDING SIGN
N.T.S.

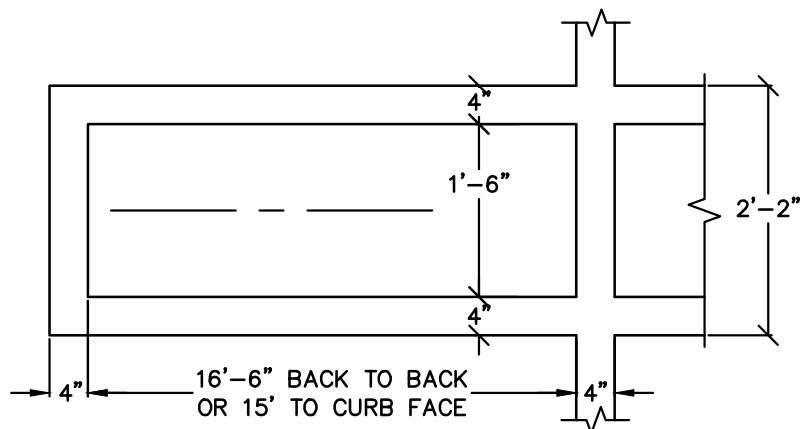
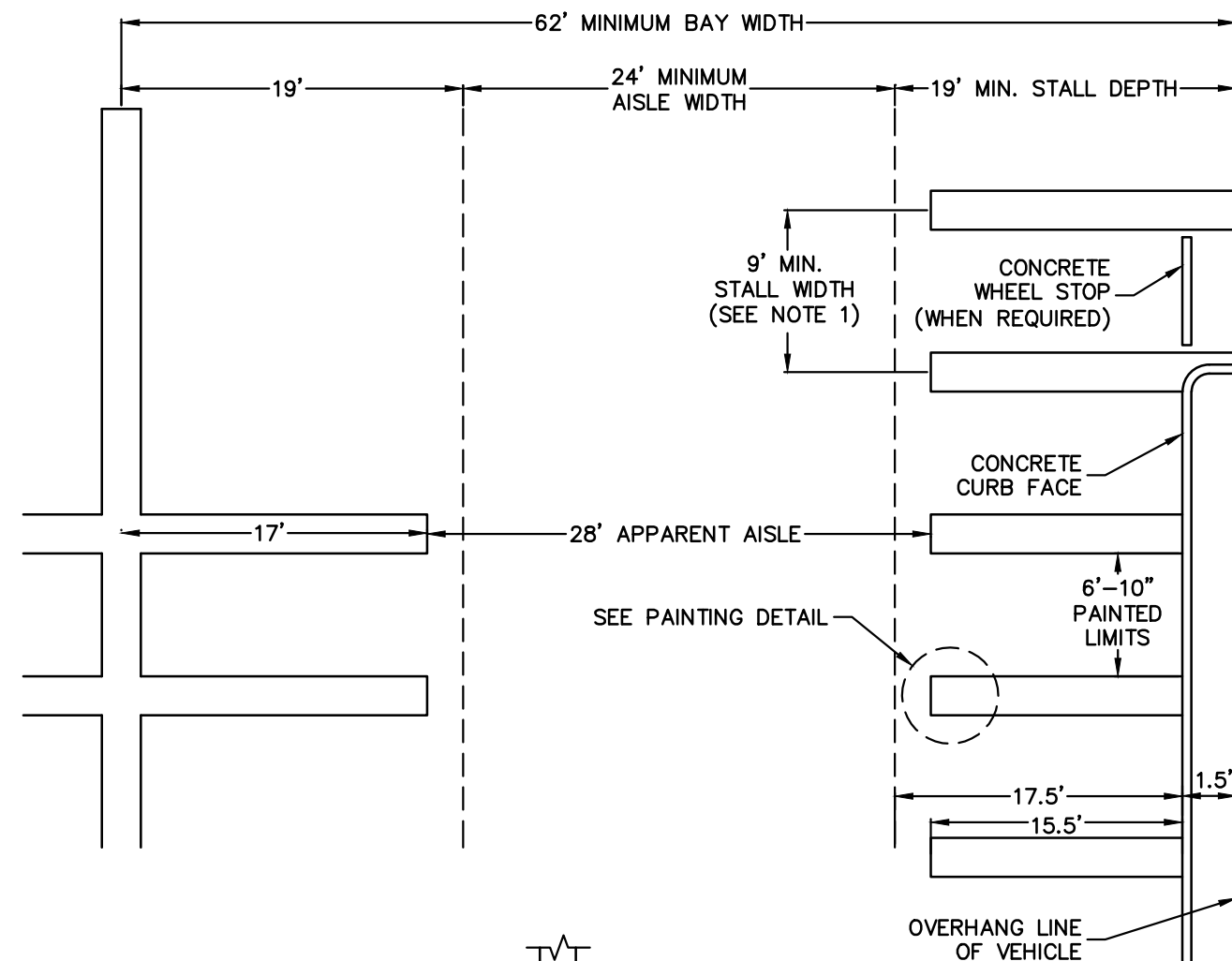
VILLAGE OF WESLEY HILLS
ROCKLAND COUNTY, N.Y.

NO PARKING / NO STANDING SIGN



PARKING LOT PAVEMENT SECTION N.T.S.

VILLAGE OF WESLEY HILLS ROCKLAND COUNTY, N.Y.
OFF STREET PARKING PAVEMENT SECTION



NOTES:

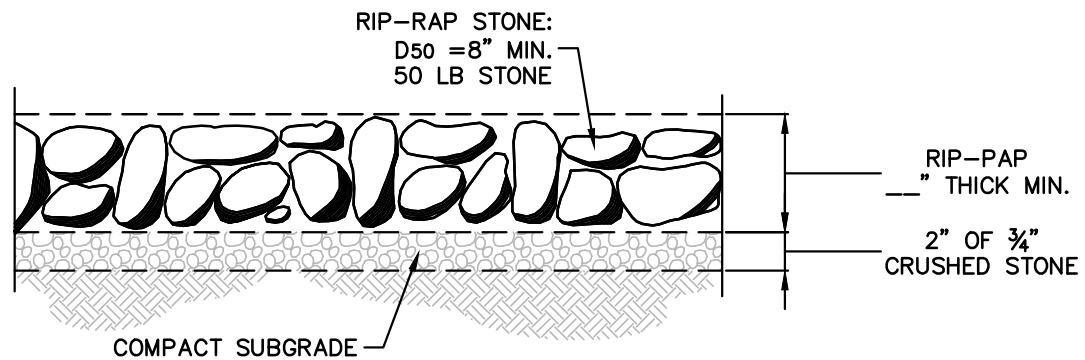
1. THE PANNING BOARD MAY PERMIT 8'-6" STALLS IN ALL DISTRICTS, WHERE SUCH SPACES ARE SPECIFICALLY RESERVED FOR EMPLOYEE.
2. NO MORE THAN TREE FEET OF NON-PAVED AREA ABUTTING A STALL MAY BE COUNTED AS STALL LENGTH PROVIDED A NON-MOUNTABLE CONCRETE CURB, NOT MORE THAN 6" ABOVE GRADE OF PARKING SURFACE, IS PROVIDED. SUCH OVERHANG AREA SHALL NOT BE DEEMED TO MEET ANY WALK OR PLANTING REQUIREMENT.
3. PAINTED LINES TO BE NOT LESS THAN 4" IN WIDTH OF APPROVED EXTERIOR GRADE ROADWAY PAINT.
4. FLAT ENDS INSTEAD OF ROUNDED ENDS ARE PERMISSIBLE.

PARKING AND STRIPING DETAIL

N.T.S.

VILLAGE OF WESLEY HILLS
ROCKLAND COUNTY, N.Y.

PARKING AND STRIPING DETAIL



RIP-RAP DETAIL

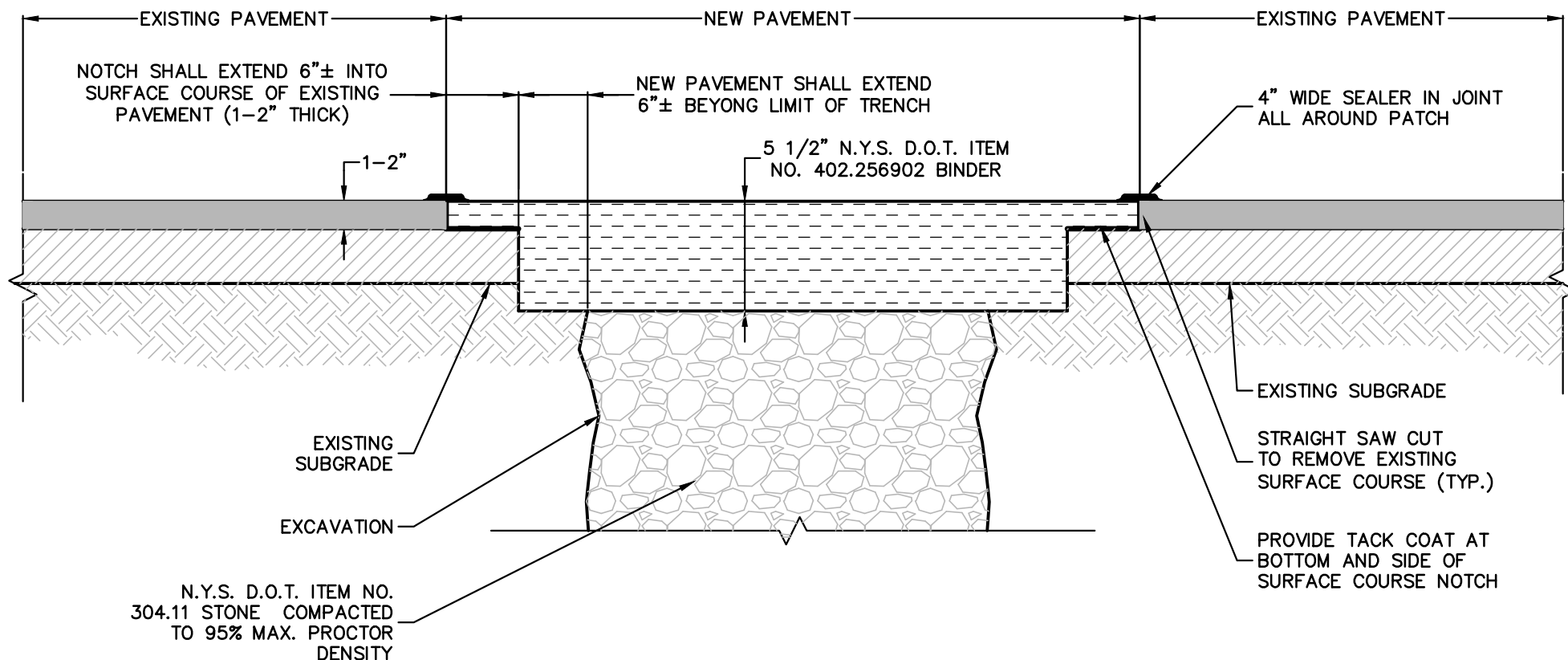
N.T.S.

NOTES:

1. STONE SIZE TO BE DETERMINED BY SHEAR STRESS COMPUTATIONS

VILLAGE OF WESLEY HILLS
ROCKLAND COUNTY, N.Y.

RIP-RAP DETAIL



NOTES:

1. FOR OPENINGS THAT SPAN 30% OR MORE OF THE ROAD WIDTH, RESURFACE THE ENTIRE WIDTH OF THE ROAD AFTER REMOVING THE EXISTING SURFACE COURSE.
2. CONTRACTOR MUST PROVIDE CERTIFICATION THAT THE ROAD OPENING REPAIR WAS PERFORMED IN CONFORMANCE WITH THIS DETAIL. THIS MAY BE ACCOMPLISHED BY EITHER:
 - a. PROVIDE CERTIFICATION FROM A N.Y.S. LICENSED PROFESSIONAL ENGINEER CERTIFYING THAT THE MATERIALS AND CONSTRUCTION OF THE ROAD OPENING REPAIR CONFORM TO THE VILLAGE DETAIL.
 - OR
 - b. COORDINATE WITH THE VILLAGE ENGINEERING CONSULTANT TO SCHEDULE THEIR WITNESSING OF THE CONSTRUCTION. (THE VILLAGE WILL IN TURN BACK CHARGE THE CONTRACTOR FOR THE COST OF THE ENGINEERING CONSULTANTS SERVICES.) THE ENGINEERING CONSULTANT WILL PROVIDE THE REQUIRED CERTIFICATION.

ROAD OPENING REPAIR DETAIL

N.T.S.

VILLAGE OF WESLEY HILLS
ROCKLAND COUNTY, N.Y.

ROAD OPENING REPAIR DETAIL